

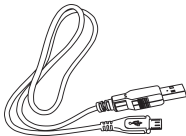
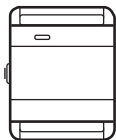
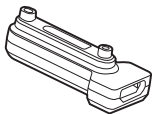
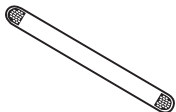
# Wrist band of heart rate sensor

## Connection

This Heart Rate Sensor is equipped with ANT+ and Bluetooth Smart (4.0) protocols, which enables to connect with display devices or APP which uses the same protocols.

## Package Contain

Fabric wrist band    Charging adapter    Heart rate sensor    Micro USB cable



## Operation

1. Press the button to turn on the device, the LED light flashes green indicates the heart rate sensor is ON.

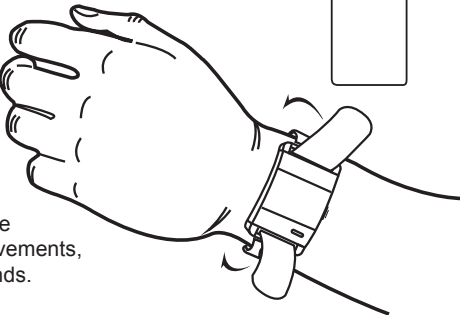
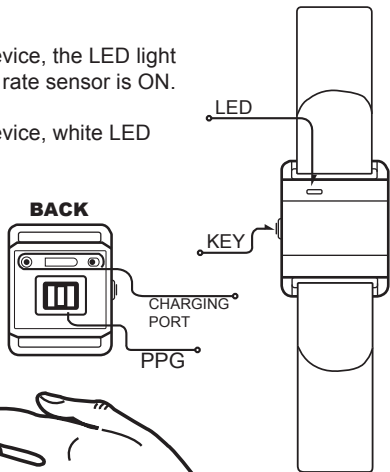
2. Press the button to turn off the device, white LED light will flash for 1 second.

3. Red light indicates the battery power is low.

4. Wear the heart rate sensor on the upper portion of the wrist. Sensor should be on the inside or on top of wrist. It should be tighten not to move.

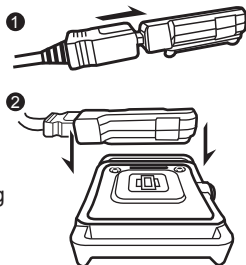
5. Before taking measurements, please allow 5-10 seconds for the sensor to calibrate after wearing and turning on the device.

6. When the wrist band heart rate sensor experiences large movements, the data may delay few seconds.



## Recharge

1. Connect micro USB cable with the charging adapter.
2. Attach the charging adapter to the sensor, the cable should be on the opposite side of the button. Please make sure the pins are touching if the pins are not connected, please switch position and try again. Do not attach the charging adapter to the sensor by force, it may damage the sensor.
3. When the sensor is charging a red light will be on.
4. Charge the heart rate sensor for 2 hours or until the red light is off.



## LED Function

**Green light flashes:** Device is on and ready to connect with BLE receiver  
ANT+ will always show green light.

**Red light flashes:** Battery power is low

**Blue light flashes:** Device successfully connect with BLE receiver

**White light flashes:** When the device is being turned off

## Care and Maintenance Instruction

1. Keep the sensor away from high voltage locations. Please separate the strap and heart rate sensor if cleaning is need.
2. The strap should be rinsed under running water or washed in the washing machine within a laundry pouch.
3. Use dry and soft towel to clean the PPG area.
4. When low battery please charge the device, it will result inaccurate measurement.

## Specification

Frequency	BLE4.0, ANT+
LED Indicator	Blue, Green, Red and White
Working Hours	13 hours
Charging Time	2 hours
Device Weight	9.6g
Sensor Dimension	30.2mm X 37.9mm

Wrist Band Dimension	265mm x 25mm
Waterproof	IPX6
Transmission Distance	100inch
Working Temperature	0°C to 50°C
Storage Temperature	-10°C to 60°C
Battery Type	Lithium Polymer Battery
Accuracy	within +/- 3 accuracy compare with ECG chest belt